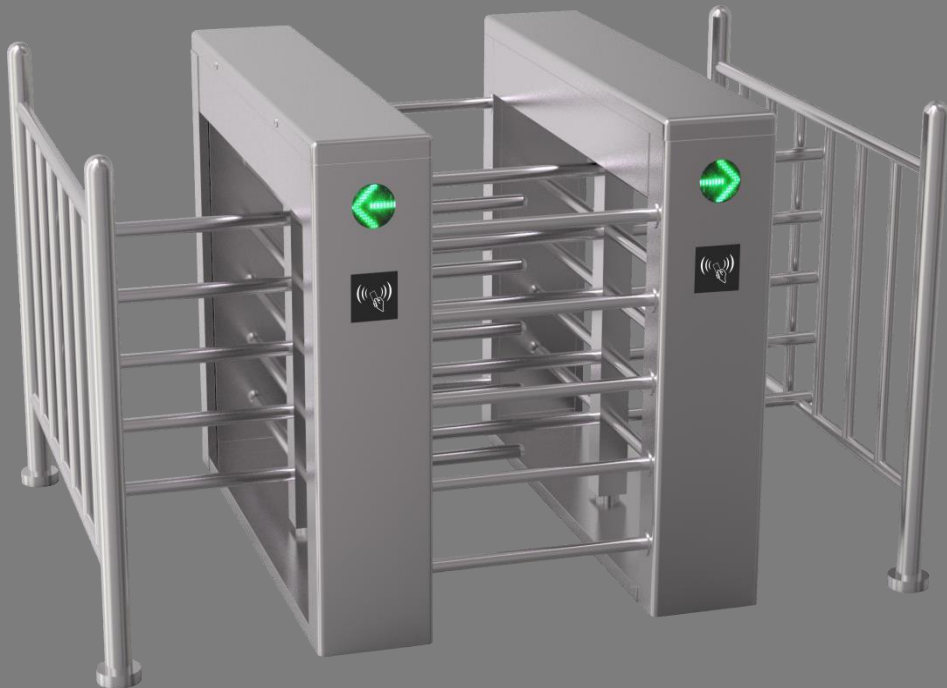


Double Lane - Bi directional/Single directional for option

Model No: TS-FHT-400



Products Introduction:

Waist-height turnstiles are a frequent choice for simple access control and monitoring where security is not the most important priority. Where complete access-control is needed, making it almost impossible for an unauthorized person to access your site

Waist height turnstiles are built to stop tailgating at the exterior of your facility. While they completely shut down any attempts at tailgating, they are not able to prevent piggybacking. Waist height turnstiles are cost-effective and tend to have a lifespan of 25+ years.

We provide models in stainless-steel 304 and 316. They can be powder coated to your preference and can also be motorized. full waterproofed and weatherproofed

Access Control System (Optional)



**SWIPE CARD**  
Access with authorized card and payment card sex piece swipe to open the way



**IRIS RECOGNITION**  
Use the authorized eyes of Iris Recognition to pass through the entry gates



**FINGERPRINT RECOGNITION**  
Access with authorized fingerprint authentication



**PALM VEIN RECOGNITION**  
Use authorized palm vein recognition to pass into



**COIN/TICKET**  
Use disposable coins to coin through to enter



**FACE RECOGNITION**  
Use authorized face recognition to enter



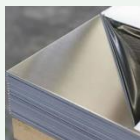
**QR CODE**  
Scan in with authorization QR code and barcode



**MANUAL OPERATION**  
Manual use of wired and wireless to open gates for entry

## Features

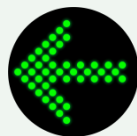
### Reliability



- Full body made by Stainless steel 304
- For humidity or corrosiveness application location, we suggest Stainless steel 316 or Painting with special treatment



- TECHNOSPACIO patented compact mechanism ensures the long life of the lubricating oil inside.
- High quality electrical components



### Safety and User-Orientated Design

- Smooth operation designed for mass transit

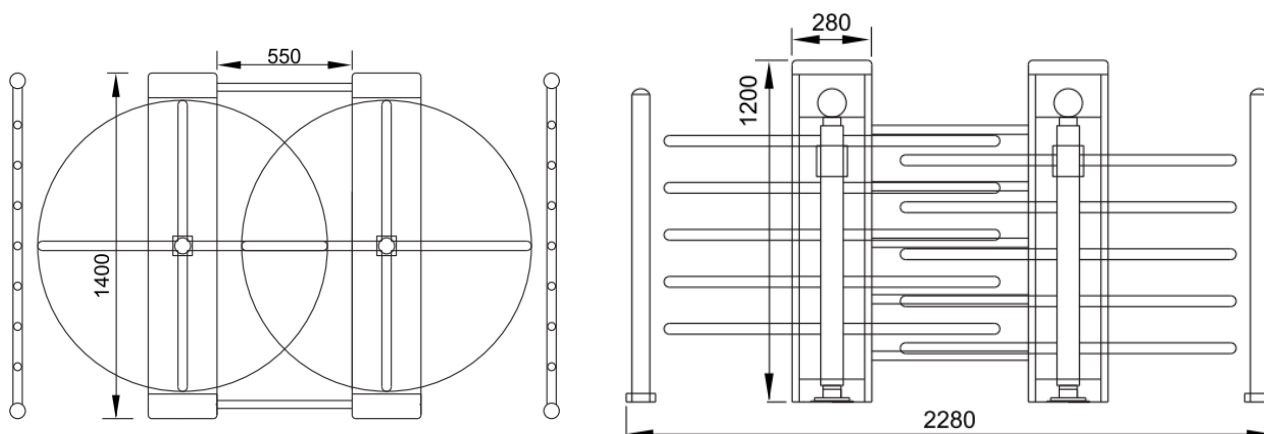
#### application

- The pictogram on the device indicating access permission and direction of movement
- Compatible with multi access control system: RFID, finger printing, password, push button, facerecognition, IRIS/Palm vein recognition etc

### Easy Integration

- Flexible reader installation plate. Customers can easily integrate with third party reader
- Standard electrical interface for third party device.
- By using compact mechanism, the turnstile has more space inside for integration
- TECHNOSPACIO provides integration service in factory, with board and peripherals installed, ensuring compliance of the system. When the turnstile is delivered, just plug it in and do the setting. Save the cost of installation.

## Specifications



<b>Power Supply</b>	AC 220 V/ 110 V, 50/60 Hz
<b>Operating Temperature</b>	-28 °C- 80 °C
<b>Operating Humidity</b>	5%-85%
<b>Working Environment</b>	Indoor / Outdoor both, IP54 Standard
<b>Rated Power</b>	60W
<b>Flow Rate</b>	25- 48 passage/minute
<b>Casework Material</b>	SUS 304 (SUS 316 for option)
<b>Mechanism</b>	Semi automatic electromagnetic mechanism with hydraulic buffer function ( full automatic brushless motor for option)
<b>Control System</b>	Dry contact
<b>Emergency Alarm function</b>	Yes
<b>Dimension</b>	1400 * 1200 * 2280 mm height + arm length 500 MM
<b>Net Weight</b>	130 kgs
<b>Material Thickness</b>	1.5mm
<b>MCBF</b>	Electromagnetic mechanism 5 million cycles , brushless motor 8 million cycles
<b>Warranty</b>	1 year